

THAMES ESTUARY PARTNERSHIP
ANNUAL FORUM 2017

DAVID PALMER

FLOODING

B U R O H A P P O L D

E N G I N E E R I N G

16th November 2017

CAREER SUMMARY

1990



Graduate
Kingston Polytechnic

1999



Chartered Engineer
Institution Civil Engineers

2006



BuroHappold
Olympics Team, London, UK

2012



Fellow
Institution of Civil Engineers

2016



Head of Water
BuroHappold

CAREER SUMMARY

1990



Lewin, Fryer & Partners
Graduated Kingston Poly

2001



Black & Veatch
Chartered 1999

2006



BuroHappold
Olympics Team

2009



BuroHappold
EUi

2012



BuroHappold
Water Group

MAJOR PROJECTS EXPERIENCE

1991



Jubilee River
Windsor, UK

1995



London Wetlands Centre
Barn Elms, London

2001



Twin Rivers Diversion
Heathrow Airport, UK

2006



IBC / MPC
Olympic Park, London

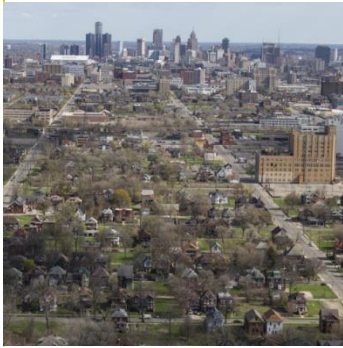
2013



Battersea Power Station
London, UK

GLOBAL EXPERIENCE

USA



Detroit Future Cities

EUROPE



Istanbul New City

AFRICA



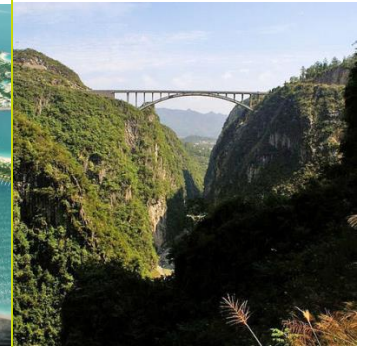
Dar Es Salaam

MIDDLE EAST



UAE

ASIA



Qianjiang Masterplan

THAMES ESTUARY PARTNERSHIP

FLOODING

B U R O H A P P O L D

E N G I N E E R I N G

16th November 2017